

All dimensions are in m.m.

TECHNICAL DATA

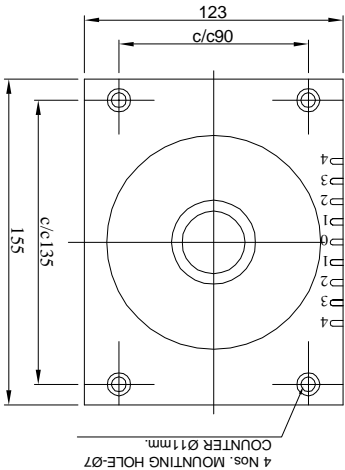
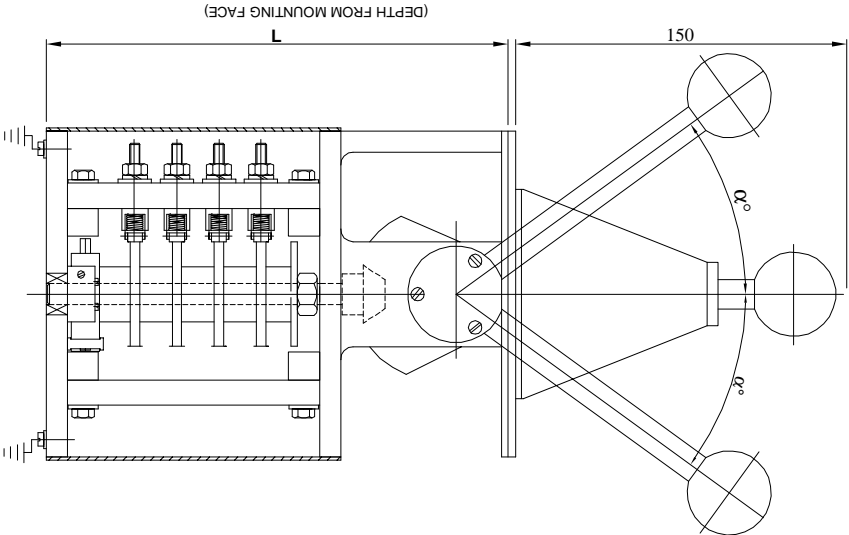
Ambient Temperature	: 55°C
Mounting Arrangement	: Suitable for mounting on control desk / Panel.
Terminals	: Suitable for conductor size 2.5mm ² .
Operation	: Stayput.
Operating Positions.	: 5-0-5 max.(optional)

RATING


Rated Voltage AC	: Upto 500V
Continuous Current	: 10A
Making Current	: 50A

Notes, :

1. The master controllers are provided with Double Break contacts.
2. The length "L" of the master controllers depends on the no. of contacts & Possibility of using one cam for two contacts, depending on the contact sequence of the controller. Hence the dimension L mentioned in the table below is max. & Indicative only.
3. $\infty^\circ = 40$ degrees for 5-0-5 position. The angular deflection between 0 to 1 position is 12 degrees and for each subsequent position, 7 degrees.



TYPE	NO. OF CONTACTS USED IN EACH DIRECTION	DIMENSION L(mm) (Max.)
MSC-5800S/8	8	262
MSC-5800S/10	10	315
MSC-5800S/12	12	365

			ELECTRONIC & POWER CONTROL CO. BHILAI-490026		
Desn	NAME	SIGN	GENERAL ARRANGEMENT DRAWING FOR JOYSTIC CONTROLLERS FOR PANEL MOUNTING TYPE MSC-5800S		
Dm	SHWETA				
Chd	M.BAHADUR				
Apd	N.BAHADUR				
Date	24-03-2008		DRG. NO. :EPCC/MS-5800S/01/01	TOTAL NO. OF SHEETS	
SIGN & DATE			Scale: N.T.S.	Sheet:	of
R.NO.	REV.				