

KAKKU JOY STICK OPERATED MASTER CONTROLLERS

SERIES MSC – 5600

SPECIAL FEATURES

- Available as single or dual master controllers.
- Double break contacts with high quality silver cadmium oxide contact tips having arc-retarding & anti-welding properties.
- Provided with special rubber gaskets on the cover to make it dust proof.
- Cams and contact blocks of high grade phenolic fibrous moulding material having excellent electrical and mechanical properties.
- Star wheel for positive notching at each step and pronounced notching at neutral.
- Universal design for both AC & DC applications.
- KAKKU** Master controllers are also noted for ease of assembly, dis-assembly & adjustments as well as free access to all the parts.
- Contact sequence chart pasted on inside face of cover.
- Long life with reliable performance and trouble free operation.

APPLICATION

KAKKU Joystic Master Controllers Series MSC-5600 are used for control of electric drives of EOT cranes, hoists, transfer cars, Grab-buckets, unloaders, steel mills, conveyors and other heavy material handling equipment.

SELECTION CHART

Type	Max. No. of Contacts
MSC-5600 / 8	Upto 8
MSC-5600 / 12	Upto 12
MSC-5600 / 14	Upto 14
MSC- 5600 / 16	Upto 16
MSC-5600 / 24	Upto 24

- Add suffix "D" for universal / dual controller.
- Add suffix "SR" for spring return.

TECHNICAL DATA

Ambient Temperature	: 55°C.
Mounting Arrangement	: Suitable for foot/ wall, panel & control desk mounting
Terminals	: Suitable for conductor size 2.5mm ² .
Operation	: Stayput / Spring return
Max. No. of operating positions.	: Upto 5 – 0 – 5
Max. No. of contacts per circuit	
(a) Single Master Controller	: Upto 24
(b) Dual Master Controller	: Upto 16

RATINGS

Rated Voltage AC or DC	: Upto 500V
Continuous Current	: 20A
Making Current	: 50A
(Upto 500V AC)	
Breaking Current at inductive loads	
110V DC	: 2.5A
220V DC	: 1.5A
Upto 500V AC	: 10.0A

OPTIONAL EXTRAS

- Enclosure as per IP –41./54
- Spring return of handle to neutral.
- Dead man handle with contact
- Special type of handle. (furnish drawing)

ORDERING INFORMATION

- Give **KAKKU** type.
- No. of operating positions or steps.
- Contact sequence chart indicating opening & closing of each contact in every position of the controller.
- Name plate details of operation i.e. 'HOIST – LOWER', 'FORWARD – REVERSE' etc.
- Single or universal operation (dual controller)
- Specify optional extras if any.

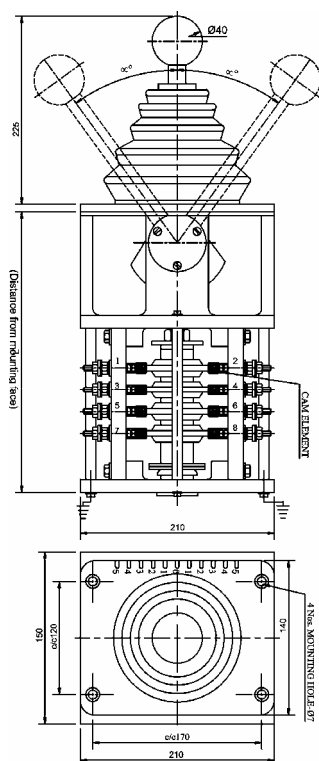
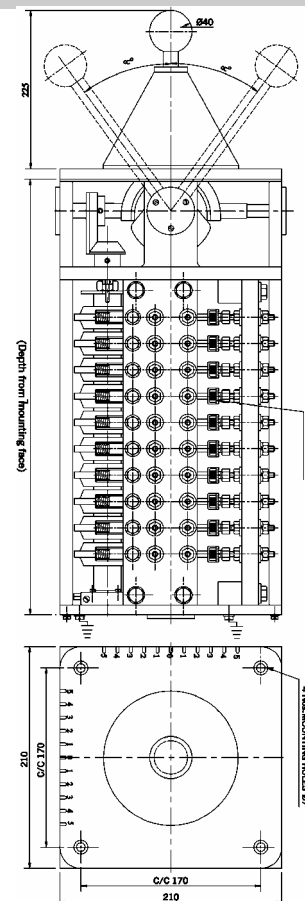
Product improvement is a continuous process at KAKKU. Hence data given in this catalogue is subject to revision without notice.



Symbol Of Reliability

Dual Axis / Universal Joystick Controller		
Type	Dimension (L) in MM	No. of Contacts in each axis
MSC-5600 D8/8	365	8
MSC-5600 D10/10	415	10
MSC-5600 D12/12	465	12

The Master Controllers can be provided with Dead man push button on the top of the operating lever as an optional feature. For dead man contact add suffix "X1 for 1NO+1NC contact & X2 for 2 NO+2NC contact



Single Axis Joystick Controller		
Type	Dimension (L) in MM	No. of Contacts in each axis
MSC-5600 S8	270	8
MSC-5600 S12	320	12
MSC-5600 S14	345	14
MSC-5600 S16	370	16

The Master Controllers can be provided with Dead man push button on the top of the operating lever as an optional feature. For dead man contact add suffix "X1 for 1NO+1NC contact & X2 for 2 NO+2NC contact"

Product improvement is a continuous process at KAKKU. Hence data given in this catalogue is subject to revision without notice.

Electronic & Power Control Co.

(AN ENTERPRISE OF KAKKU E & P CONTROL (P) LTD.)
1, Industrial Estate, Bhilai 490 026,
(Chhattisgarh) INDIA.



Symbol Of Reliability

Tel : 91-788-2382610, 2382297
Fax : 91-788-2381797, 2321836
E-mail : kakku_bhilai@yahoo.com