

KAKKU JOY STICK OPERATED MASTER CONTROLLERS

SERIES MSC - 3400

SPECIAL FEATURES

- § Available as single axis controllers.
- § Double break contacts with high quality silver cadmium oxide contact tips having arc-retarding & anti-welding properties.
- § Cams and contact blocks of high grade phenolic fibrous moulding material having excellent electrical and mechanical properties.
- § Star wheel for positive notching at each step and pronounced notching at neutral..
- § **KAKKU** Joystick controllers are also noted for ease of assembly, dis-assembly & adjustments as well as free access to all the parts.
- § Long life with reliable performance and trouble free operation.

APPLICATION

KAKKU Joystick Controllers Series MSC-3400 are used for control of electric drives of EOT cranes, hoists, transfer cars, Grab-buckets, unloaders, steel mills, conveyors and other heavy material handling equipment.

TECHNICAL DATA

Ambient Temperature	: 55°C.
Mounting Arrangement	: Suitable for foot/ wall mounting.
Housing	: Metallic enclosure with sheet steel cover.
Enclosure Category	: As per IP-54 of IS :2147-1962.
Terminals	: Suitable for conductor size 2.5mm ² .
Operation	: Stayput.
Max. No. of operating positions.	: Upto 5 – 0 – 5
Max. No. of contacts per circuit	
(a) Single Master Controller	: Upto 12

RATINGS

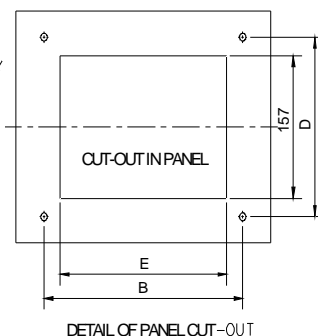
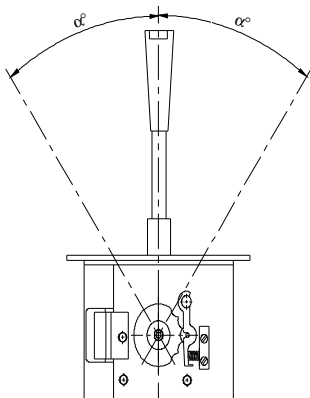
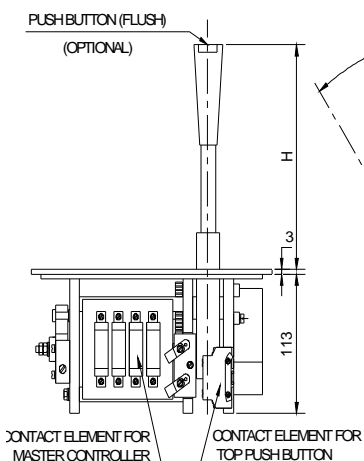
Rated Voltage AC or DC	: Upto 500V
Continuous Current	: 10A
Making Current	: 40A
(Upto 500V AC)	
Breaking Current at inductive loads	
110V DC	: 2.5A
220V DC	: 1.5A
Upto 500V AC	: 10.0A

OPTIONAL EXTRA

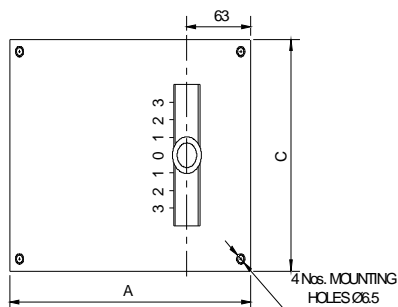
- Enclosure as per IP 41/54
- Spring Return handle
- Deadman contact

SERIES MSC-3400

Dimensions (mm)



OPERATION	ANGLE	DIM H
1-0-1	18	130
2-0-2	36	177
3-0-3	54	



NO OF CONTACTS	A	B	C	D	E
4	205	185	190	174	172
6	235	215	190	174	202
8	265	245	190	174	232

Product improvement is a continuous process at KAKKU. Hence data given in this catalogue is subject to revision without notice.

Electronic & Power Control Co.

(AN ENTERPRISE OF KAKKU E & P CONTROL (P) LTD.)
1, Industrial Estate, Bhilai 490 026,
(Chhattisgarh) INDIA.



Symbol Of Reliability

Tel : 91-788-2280610, 2286494
Fax : 91-788-2281797
E-mail : sales@kakkuindia.com
Website : www.kakkuindia.com