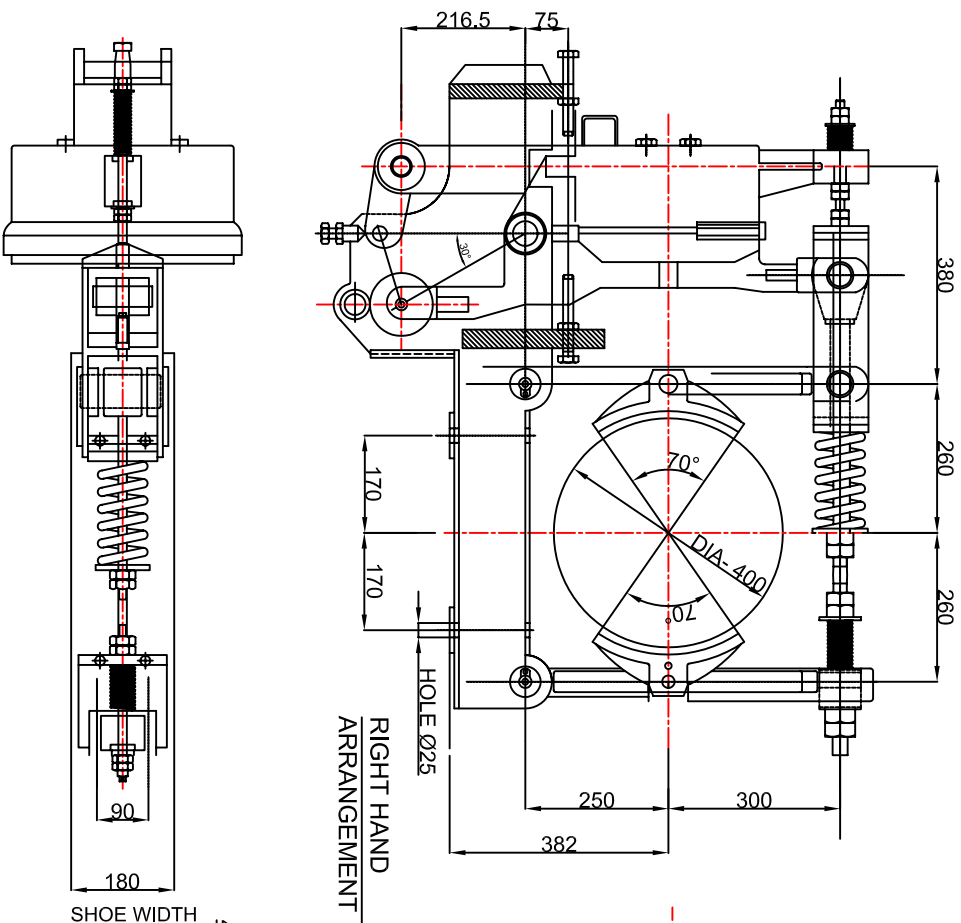
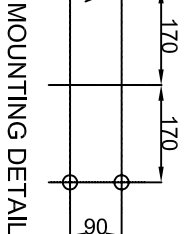
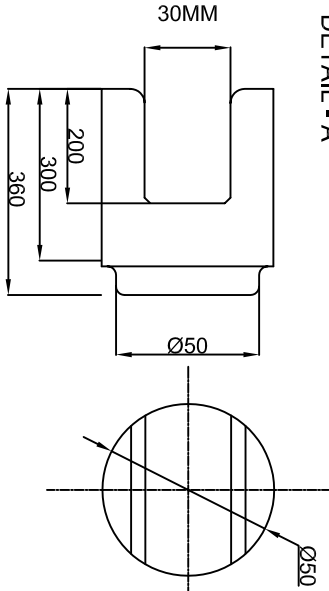
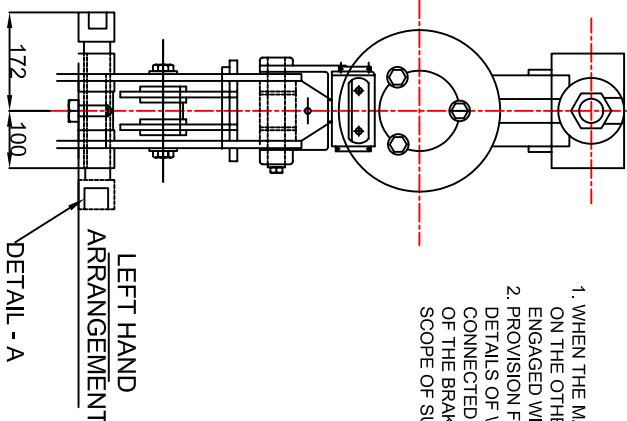


All dimensions are in m.m.



**SPECIAL CHARACTERISTICS**

1. WHEN THE MAGNET IS DE-ENERGISED, THE BRAKE SHOE WILL BE FULLY OPEN, ON THE OTHER HAND, WHEN THE MAGNET IS ENERGISED, THE BRAKE SHOE WILL BE ENGAGED WITH THE BRAKE DRUM.
2. PROVISION FOR LINKING THE OPERATION OF THE BRAKE IN THE FORM OF A LEVER, DETAILS OF WHICH ARE GIVE IN DETAIL 1, IS TO BE MADE, WHICH IN TURN WILL BE CONNECTED TO A HAND BRAKE MECHANISM. (FOR BOTH LEFT AND RIGHT POSITION OF THE BRAKE AS SHOWN IN THE DRWG.) HAND BRAKE MECHANISM IS NOT IN THE SCOPE OF SUPPLY.



**TECHNICAL DATA :**

- 1). MAX RATED TORQUE : 150 KG mtr.
- 2). RATED VOLTAGE : 220V DC
- 3). OPERATION : POWER TO OFF (REVERSE)
- 4). PAINT SHADE : ADMILITARY GREY
- 5). DUTY : INTERMITTENT



NAME SIGN

Desn

Drm MANESH

Chd T.L. SAHU

Apd M.BAHADUR

Date 12-04-2012

ELECTRONICS & POWER CONTROL CO.  
BHILAI- 490026

GENERAL ARRANGEMENT DRAWING  
FOR  
REVERSE OPERATED BRAKE  
TYPE - : KBDR-400

DRG. NO.:EPCC/KBDR-400/123/01

TOTAL NO. OF SHEETS : 1

Scale: N.T.S. Sheet: 1 of 1