

KAKKU HEAVY DUTY MASTER CONTROLLERS

SERIES MSC – 1000

SPECIAL FEATURES

- Double break contacts with high quality silver cadmium oxide contact tips having arc-retarding & anti welding properties.
- Provided with specially treated oil resistant rubber gaskets at all the joints to make it completely dust proof.
- Cams and contact blocks of high grade phenolic fibrous moulding material having excellent electrical & mechanical properties.
- Unified design such that the main parts as well as individual components are identical over the entire range.
- Star wheel for positive notching at each step and pronounced notching at neutral.
- Universal design for both AC & DC applications.
- KAKKU** master controllers are also noted for ease for assembly, dis-assembly & adjustments as well as free access to all the parts.

- Contact sequence chart pasted on inside face of cover and name plate of operational details indicated clearly.
- Long life with reliable performance and trouble free operation.

APPLICATION

KAKKU Mill Duty Master Controllers Series MSC-1000 are used for remote control of electric drives of EOT cranes, hoists, transfer cars, grab-buckets, unloaders, steel mills, conveyors and other heavy material handling equipments.

TECHNICAL DATA

Ambient Temperature	: 55°C.
Mounting Arrangement	: Surface Mounting.
Housing	: Cast Iron/ Al.
Enclosure category	: As per IP-54 of IS : 2147-1962.
Terminals	: Suitable for conductor size 2.5 mm ² .
Max. No. of operation Positions.	: 6 – 0 – 6 for stayput types 1 – 0 – 1 for self return types
Max. No. of contacts/ circuits	: Stayput types upto 4 for self return types.

RATINGS

Rated Voltage	Permissible Continuous Current	Making Ccurrent upto 500V AC	Breaking Current at Inductive Load (Amps.)			
			DC			Upto 500V AC
			110V	220V	440V	
Upto 500V AC or DC	10A	50A	2.5	1.5	0.5	10

Permissible Switchings : 800 operations per hour.

SELECTION CHART

Type	Max. No. of contacts/ circuits	Fig.	~erst-while USSR series
MSC – 1000/ 4	4	1	KK – 8100T
MSC – 1000/ 6	6	1	KK – 8200T
MSC – 1000/ 12	12	1	KK – 8300T
MSC – 1000/ 8400	12	2	KK – 8400T
MSC – 1000/ 8460	6	2	KK – 8460T
MSC – 1000/ 8500	12	3	KK – 8500T
MSC – 1000/ 8560	6	3	KK – 8560T
MSC – 1000/ 8600	12	4	KK – 8600T
MSC – 1000/ 8660	6	4	KK – 8660T
MSC – 1000/ 8700	12	5	KK – 8700T
MSC – 1000/ 8760	6	5	KK – 8760T

DIMENSIONS

- As per relevant figures shown in the dimensional data sheet.

OPTIONAL EXTRAS

- Enclosure as per IP-55 or superior.
- Provision of make before break contacts.
- Special type of handle. (furnish drawing).
- Suitable base plate at bottom to match any mounting dimension.(furnish drawing)
- Epoxy paint for special applications.
- Contacts with thermal rating of 40 Amps.
- Can also be supplied as 60A drum controller.

ORDERING INFORMATION

- Give **KAKKU** type.
- No. of operating positions or steps.
- Contact sequence chart indicating opening & closing of each contact in every position of the controller.
- Name plate details of operation i.e. 'HOIST-LOWER', 'FORWARD-REVERSE' etc.
- Specify optional extras if any.

Product improvement is a continuous process at KAKKU. Hence data given in this catalogue is subject to revision without notice.



Symbol Of Reliability

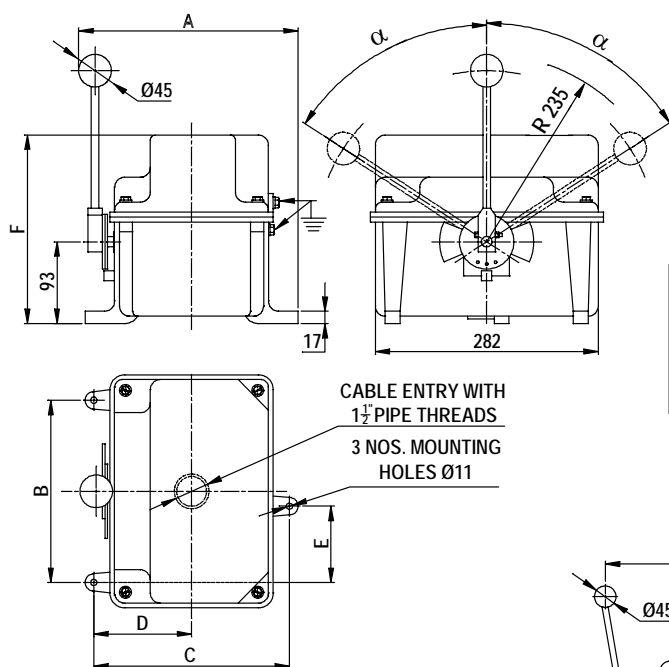


Fig. 1 : MASTER CONTROLLER

Type	No. of contacts	A	B	C	D	E	F ±4
MSC-100/4	4	222	216	184	112	88	214
MSC-1000/6	6	257	180	224	121	70	214
MSC-1000/12	12	350	180	312	156	70	220

α (Max.) for 6 - 0 - 6 position = 84°

Fig. 2 : MASTER CONTROLLER

Type	No. of contacts	A	B	C	D ±4	α (Max.)
MSC-1000 (8400)	12	384	312	156	220	25°
MSC-1000 (8460)	6	300	224	121	214	13°

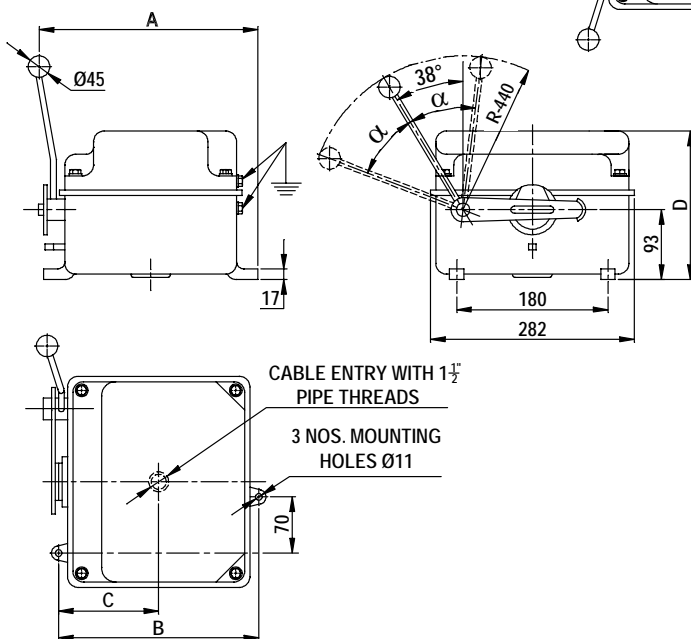
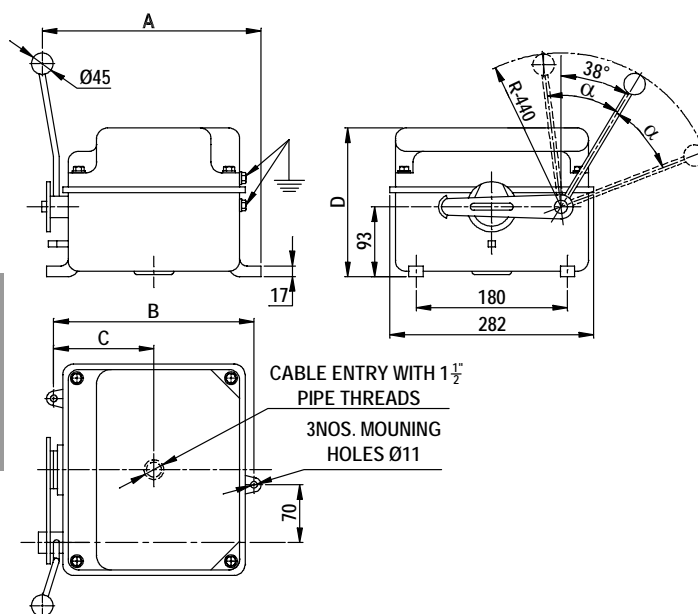


Fig. 3 : MASTER CONTROLLER

Type	No. of contacts	A	B	C	D ±4	α (Max.)
MSC-1000 (8500)	12	384	312	156	220	25°
MSC-1000 (8560)	6	300	224	121	214	13°



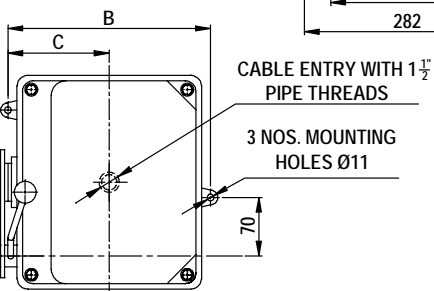
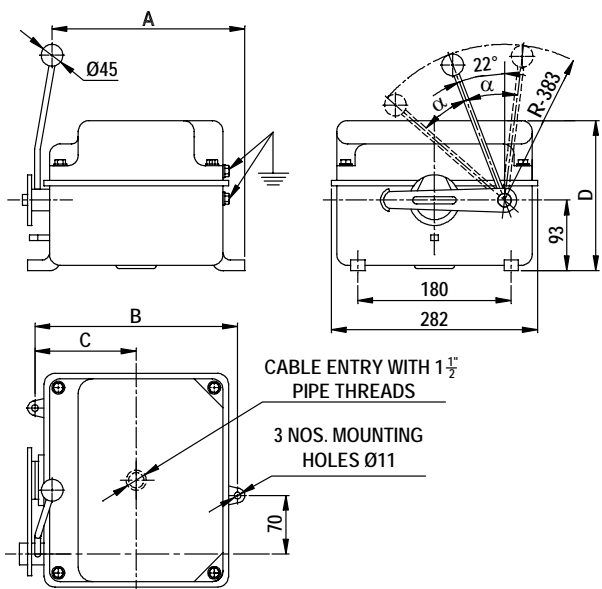
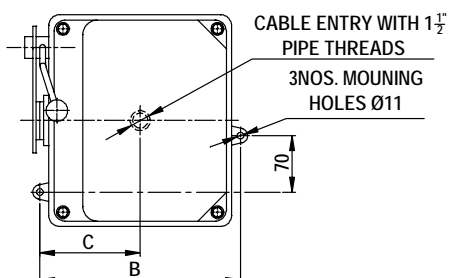
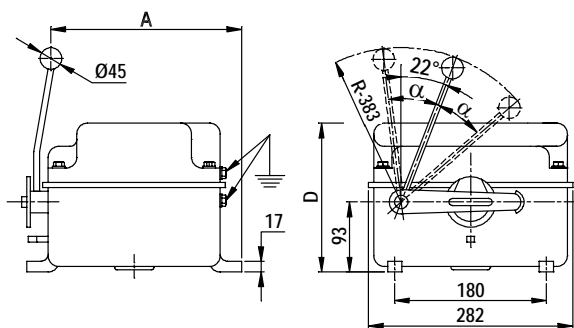


Fig. 4 : MASTER CONTROLLER

Type	No. of contacts	A	B	C	D ±4	α (Max.)
MSC-1000 (8600)	12	300	312	156	220	25°
MSC-1000 (8660)	6	214	224	121	214	13°

Fig. 5 : MASTER CONTROLLER

Type	No. of contacts	A	B	C	D ±4	α (Max.)
MSC-1000 (8700)	12	300	312	156	220	25°
MSC-1000 (8760)	6	214	224	121	214	13°