

KAKKU ARMCHAIR CONTROL UNIT TYPE KARM

SPECIAL FEATURES

- Ergonomical design to ensure greater safety and comfort, more effective results, higher productivity & low pay back period.
- Complete unit can rotate upto desired angle of rotation.
- Adjustable chair according to the height of the operator.
- Adjustable arm rest.
- Sliding arrangement of chair.
- Smooth master controllers for fatigue less operation.
- Provided with push buttons, indicating lamps etc
- Wired upto junction box.

APPLICATION

1. E.O.T. crane cabins.
2. Shovel cabins.
3. Other material handling equipments.

EQUIPMENTS MOUNTED

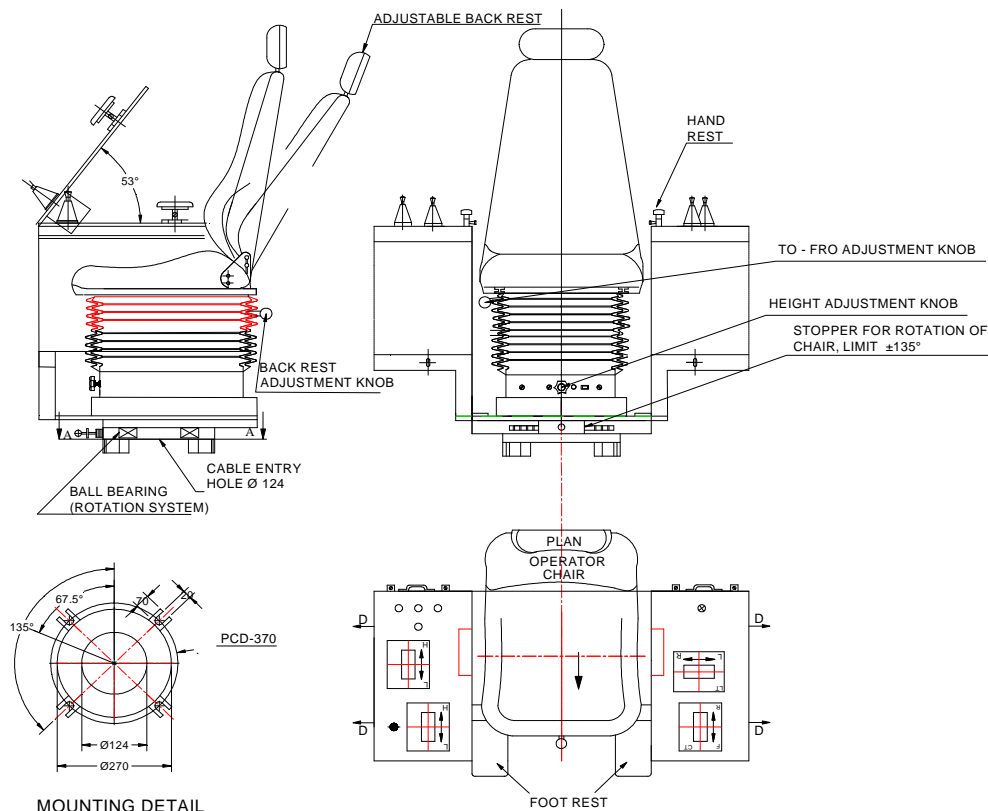
1. Master controllers
2. Push buttons
3. Indicating lamps
4. Control switches
5. Emergency stop switch
6. Foot switch

OPTIONAL EXTRAS

1. Mounting arrangement for P.C. screen, telephone, intercom & microphone etc.
2. Seat covers
3. Junction box

ORDERING INFORMATION

1. Cabin dimensions
2. Number of Master controllers required with number of steps, number of contacts & programme/ contact sequence.
3. Details of indicating lamps & pushbuttons.
4. Angle of rotation of unit as desired.
5. Optional extras if any.



Product improvement is a continuous process at KAKKU. Hence data given in this catalogue is subject to revision without notice.

Electronic & Power Control Co.

(AN ENTERPRISE OF KAKKU E & P CONTROL (P) LTD.)
1, Industrial Estate, Bhilai 490 026,
(Chhattisgarh) INDIA.



Symbol Of Reliability

Tel : 91-788-2382610, 2382297
Fax : 91-788-2381797, 2321836
E-mail : kakku_bhilai@yahoo.com
Website : www.kakkuindia.com